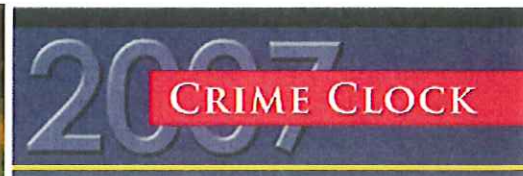
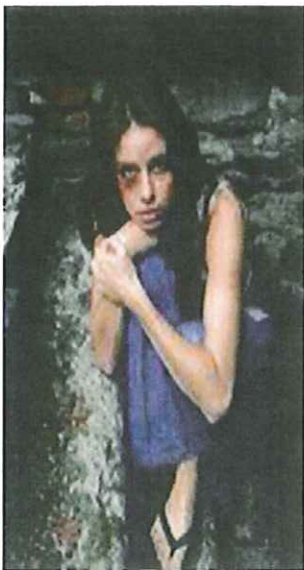


# Crime and Behavior (CJS 201)

Online Course taught by: Dr. Jeff Walsh  
[JAWalsh@ilstu.edu](mailto:JAWalsh@ilstu.edu)



<b>Every 22.4 seconds</b>	<b>One Violent Crime</b>
Every 31.0 minutes	One Murder
Every 5.8 minutes	One Forcible Rape
Every 1.2 minutes	One Robbery
Every 36.8 seconds	One Aggravated Assault
<b>Every 3.2 seconds</b>	<b>One Property Crime</b>
Every 14.5 seconds	One Burglary
Every 4.8 seconds	One Larceny-theft
Every 28.8 seconds	One Motor Vehicle Theft

Crime and Behavior (CJS 201) is a course designed to inform students about crime and its occurrence. We will be discussing patterns, trends, reporting practices, measures of crime, explanations for crime causation in the form of criminological theories, and a variety of crime typologies. Aspects of this course involve developing a better understanding how much crime is occurring and how do we know, who our criminals are, why people are committing crime, and which crimes are being committed.

The learning environment in CJS 201 is lecture and discussion based.

# Crime and Behavior

## CJS-201

Course taught by Joanne Savage

This course is the basic introduction to criminology course in our department. In it, we distinguish between the "criminology" -- the endeavor to understand the nature, distribution, and causes of crime -- and the criminal justice response. Open mind required! We will start with basic patterns and definitions to educate students about the language we use when studying crime scientifically. The meat and potatoes of the course is comprised of a series of discussions about causes of crime and the empirical evidence that scholars use to support them. This course incorporates a lot of "human behavior" in exploring child development and psychological factors, because of an emphasis on serious offending. But we also discuss social factors thought to cause crime such as poverty and urban disadvantage. Toward the end of the course, we fit in some special topics that may include sex offending, gun violence and policy, drugs and alcohol, and exposure to media violence.



Crime and Behavior